

954ER4(-PW) PCI Express Card

System Requirements

Hardware:

Description

- Fully compliant with PCI Express Base Specification Revision 1.1
- Compatible for PCI Express Card application requirements.
- PCIe Multi Function Peripheral Controller with x1Lane Interface.
- Support four PCIe functions.
- Supports PCIe Power Management.

Serial:

- Four 16C950 compatible UART.
- Full Serial modem control.
- Serial port transceiver shutdown support.
- Microsoft® Windows® 2000/XP/2003 Server/VISTA/7/8.

Package Contents

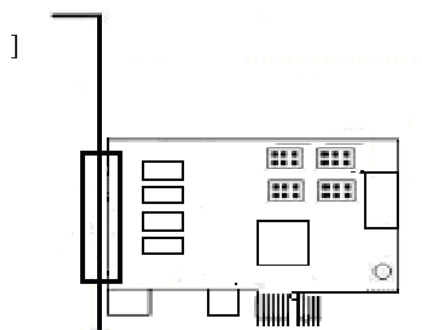
This PCI Express I/O Card package includes the following:

-Hardware installation guide -Software installation guide
-PCI-E Card -Driver CD

Please make sure that all of these items are present. If anything is missing, contact your vendor for assistance.

1. Configuration

The Super PCI Express I/O Card



Power Setting :

+5V RI +12V



SETTING	
Port1	JP1
Port2	JP2
Port3	JP3
Port4	JP4

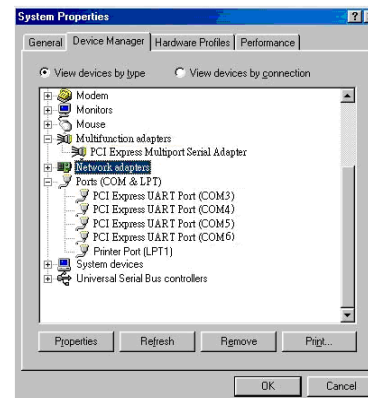
The card is specially designed to allow power output from the ninth pin of the connector to enable power up of the connected devices without power adapter. User can also choose to draw the needed power from the external system power supply

Installing the Software Drivers

This section provides information on how to install the Super PCI-E I/O drivers for the following operating systems:

Windows 2000 Driver installation:

1. The system will detect the device and ask which driver to install. Click **“Next”**
2. Select **“Search for a suitable driver for my device”**, and click **“Next”**.
3. If you have the driver files on disk D:\(CDROM), insert it into the drive and check the “ CD-ROM drives” box. Otherwise check the
4. If **“Specify a location”** was checked, you will have to enter the path to search and click **“OK”**.
5. The system will search for a driver. When it finds it, click **“Next”**. The files will be copied and the driver installed. Click **“Finish”**. The system then installs the other logical function (parallel port / local bus) in the same manner.
6. Once the PCI devices are installed, the system will install the UART ports automatically.

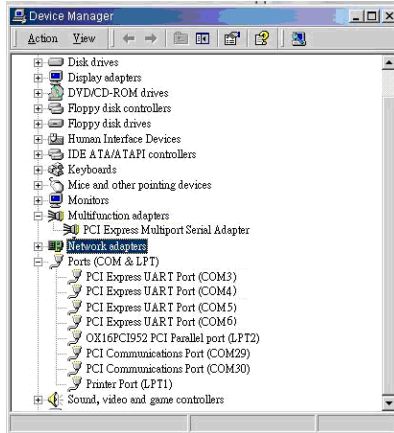


To verify successful installation in Windows® 2000:

1. From the main desktop, click on **My Computer**, then double-click on **Control Panel**, System, and **Device Manager**.
2. Double-click on either **Ports (COM & LPT)** or **Serial port** device options. **PCI I/O Board** should be displayed when successfully installed. The port is ready to connect new device.

Windows XP Driver installation:

1. At the Add New Hardware Wizard windows®, click on **“Next”**
2. Select the option **“Search for the best driver for your devices (Recommend)”** and click on **“Next”**
3. Select the option **“Specify the location”** and type in **d:\Uart (Disk D:CD-ROM)** then click on **“Next”**
4. Click **“Next”** and then **“Finish”** respectively. The system then installs the other logical function (parallel port / local bus) in the same manner.
5. Remove the diskette, then select **“Yes”** to restart the computer for the setup to take effect.

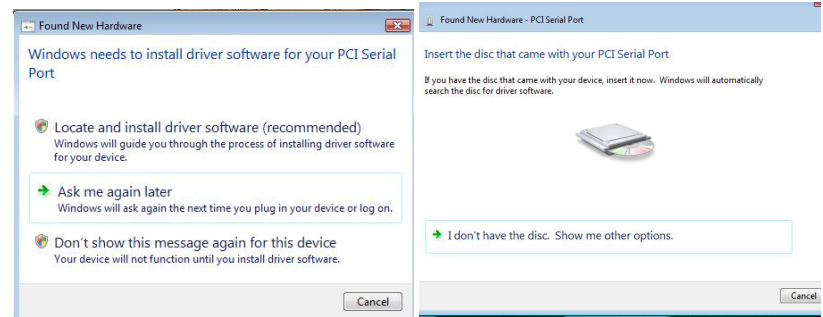


To verify successful installation in Windows® XP:

1. From the main desktop, click on **My Computer**, then double-click on **Control Panel, System, and Device Manager**.
3. Double-click on either **Ports (COM & LPT)** or **Serial port** device options. **PCI I/O Board** should be displayed when successfully installed. The port is ready to connect new device.

Windows VISTA/7/8 Driver installation:

1. Start power to RUN VISTA/7/8
2. CD drive to CD-ROM
3. Click on **“Locate and install driver software (recommended)”**.



4. Install the disc that came with your PCI Serial Port and then **“Next”**
5. Windows encountered a problem installing the driver software for your device and then **“close”** (**Disk D: \CD-ROM**)
6. Install the disc that came with your 16C95x Serial Port and then **“Next”**
7. Windows encountered a problem installing the driver software for your device and then **“close”**
8. The system then installs the other logical function (parallel port / local bus) in the same manner.
9. Check the **“Device Manager”** click on **“Device Manager”** to either **Ports (COM & LPT)** device options. **16C95x Serial Port** should be displayed when successfully installed. The port is ready to connect new device.

