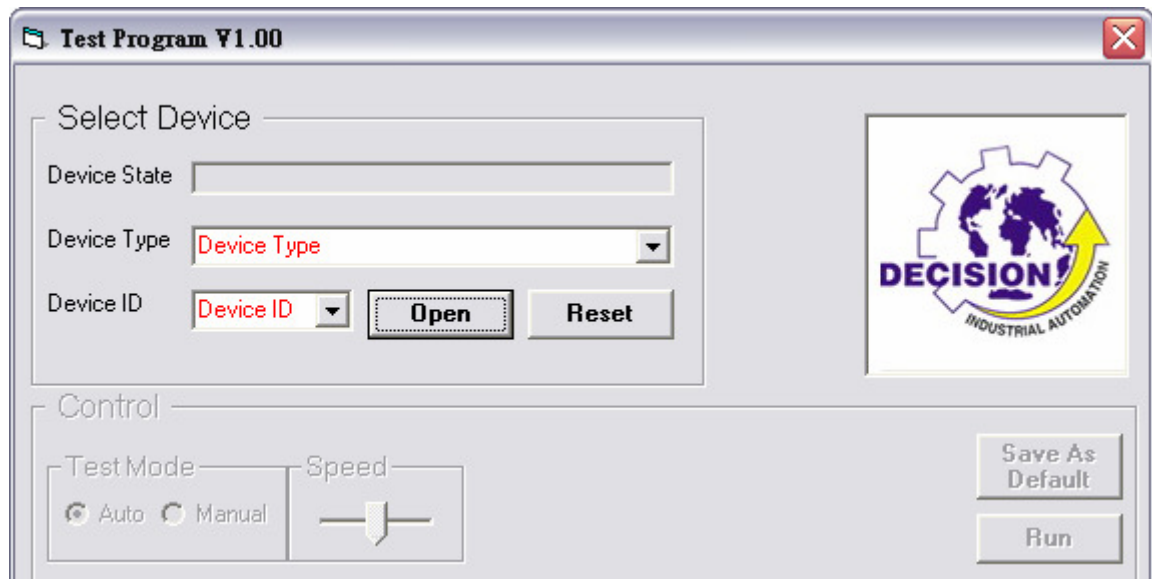


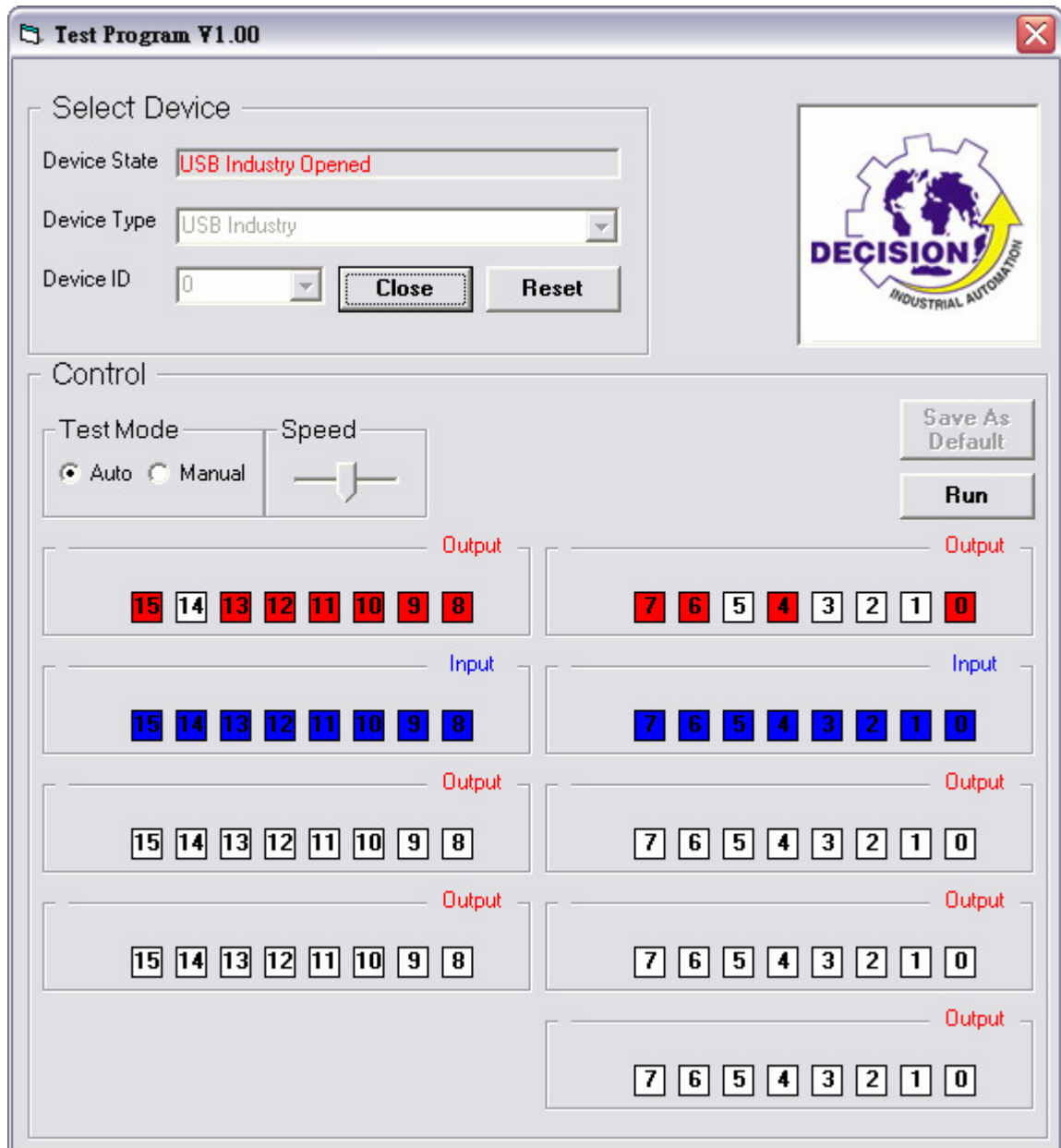
## Init Setting Manual

USB Init Set Tool.exe is the tool software which can allow users to set init default value for output port in some USB series products. You can follow the steps to set init value.

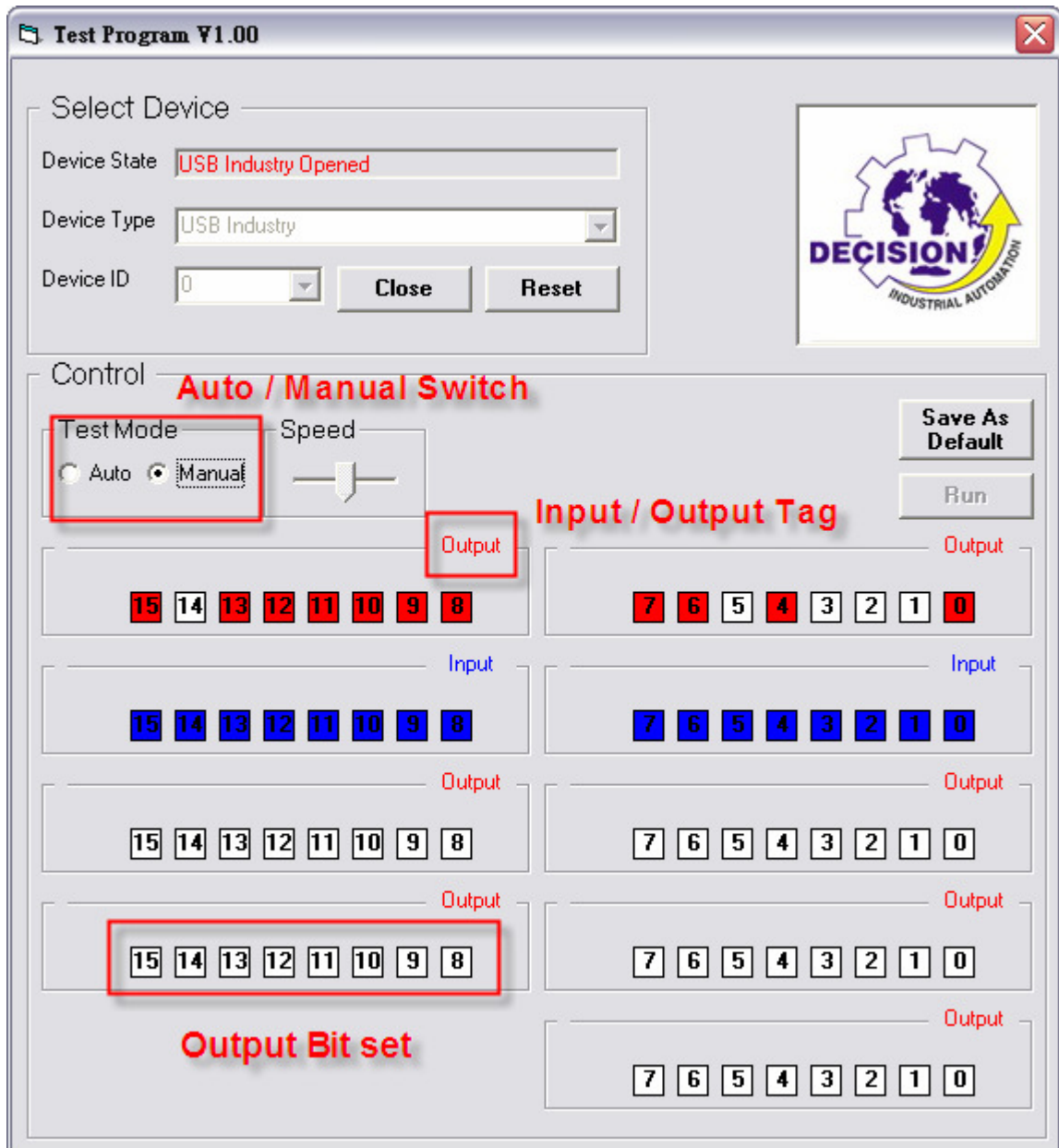
1. Remove the external input signal Voltage and only support device power.
2. Connect PC to the Board by USB and start the program.



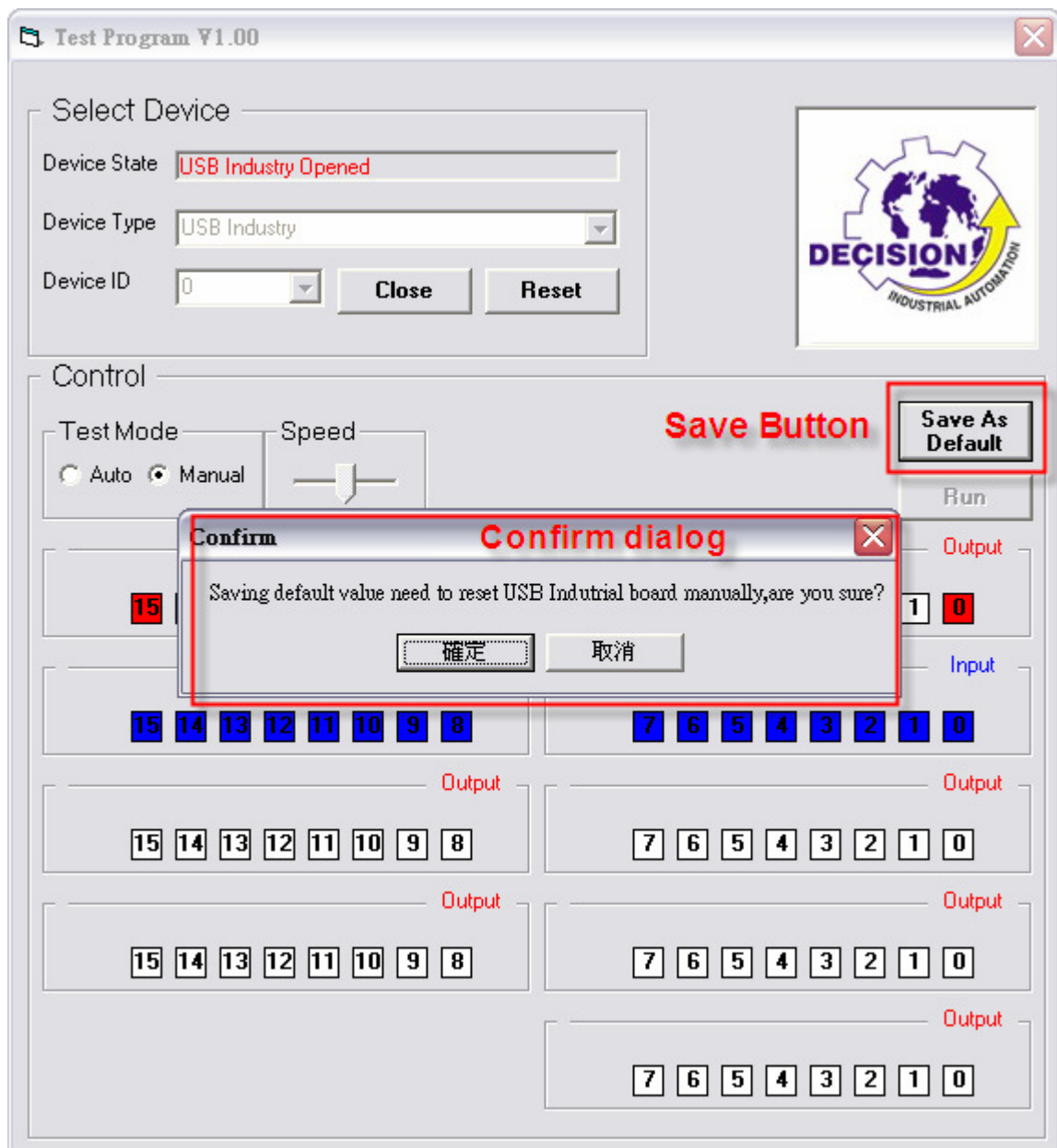
3. Select the device you want to set and select the ID matched with the board and then press “open”, now we take USB\_Industry as an example.



4. Switch into Manual mode , you can set init value on output port by clicking the output bit and init input/output setting of the port by clicking the Output / Input tag.



5. Press the “Save As Default” Button and confirm your setting.



6. When finishing setting, please press the reset button on the board. And use this tool carefully due to init value you set will be loaded when power on, it may cause damage for its init state changed.